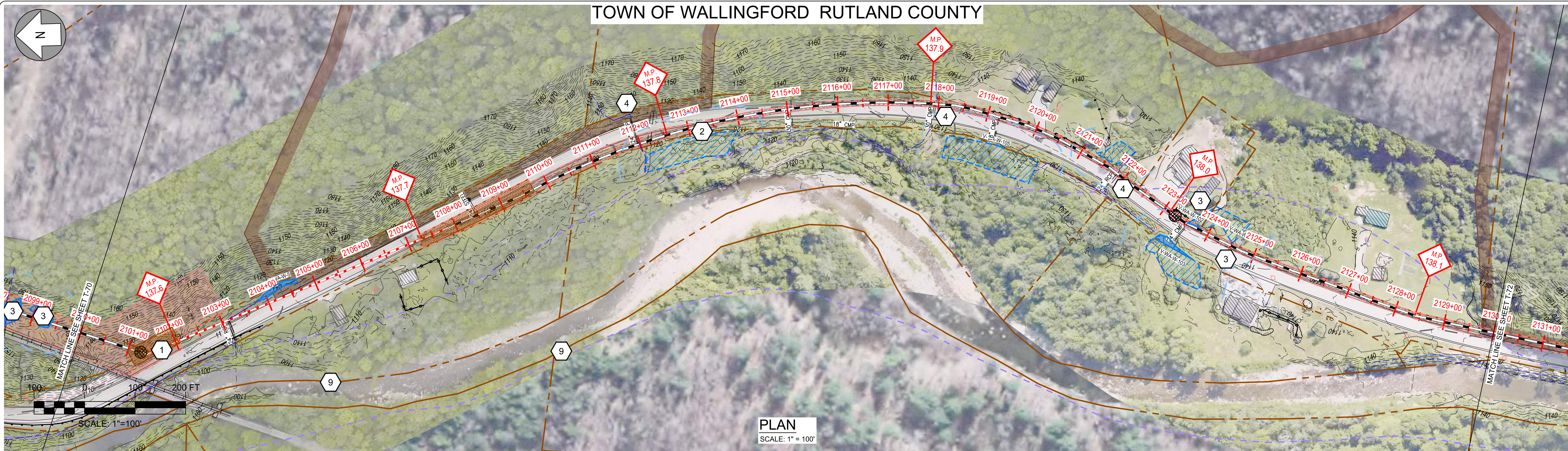


TOWN OF WALLINGFORD RUTLAND COUNTY



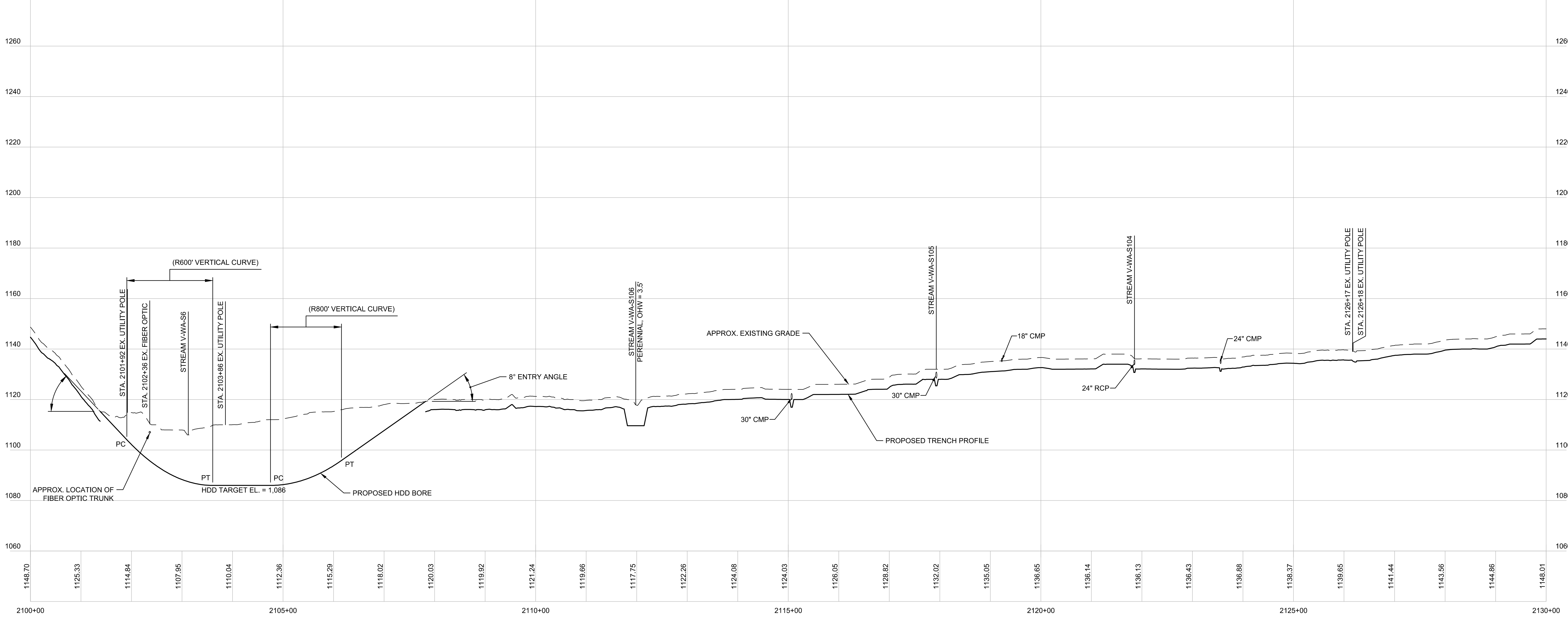
PLAN
SCALE: 1" = 100'

EPSC WORK NOTES

- 1 INSTALL STABILIZED CONSTRUCTION ENTRANCE. SEE TYPICAL DETAIL ON SHEET TD-7.
- 2 DEMARCATÉ LIMIT OF DISTURBANCE AND INSTALL PERIMETER CONTROLS IN ACCORDANCE WITH GENERAL EPSC NOTES AND CONSTRUCTION METHOD TYPICAL DETAILS ON SHEETS G-5 AND CM-1 THRU CM-5.
- 3 WETLAND CROSSING. SEE "TYPICAL WETLAND CONSTRUCTION" ON SHEET TD-7.
- 4 OPEN TRENCH EXCAVATION OR AT-CULVERT STREAM CROSSING TO BE COMPLETED IN ACCORDANCE WITH TYPICAL DETAILS ON SHEETS TD-4 AND TD-5.
- 5 REPLACE STREAM CULVERT IN ACCORDANCE WITH TYPICAL DETAILS ON SHEETS TD-3 AND TD-4.
- 6 DEMARCATÉ AND AVOID POTENTIAL ROOSTING TREE.
- 7 DEMARCATÉ AND AVOID RTE POPULATION.
- 8 IMPLEMENT RTE PLANT PROTECTION PLAN.
- 9 IMPLEMENT RTE ANIMAL PROTECTION PLAN.



REFER TO SHEETS CM-1 THROUGH CM-5 FOR CONSTRUCTION METHOD DETAILS.



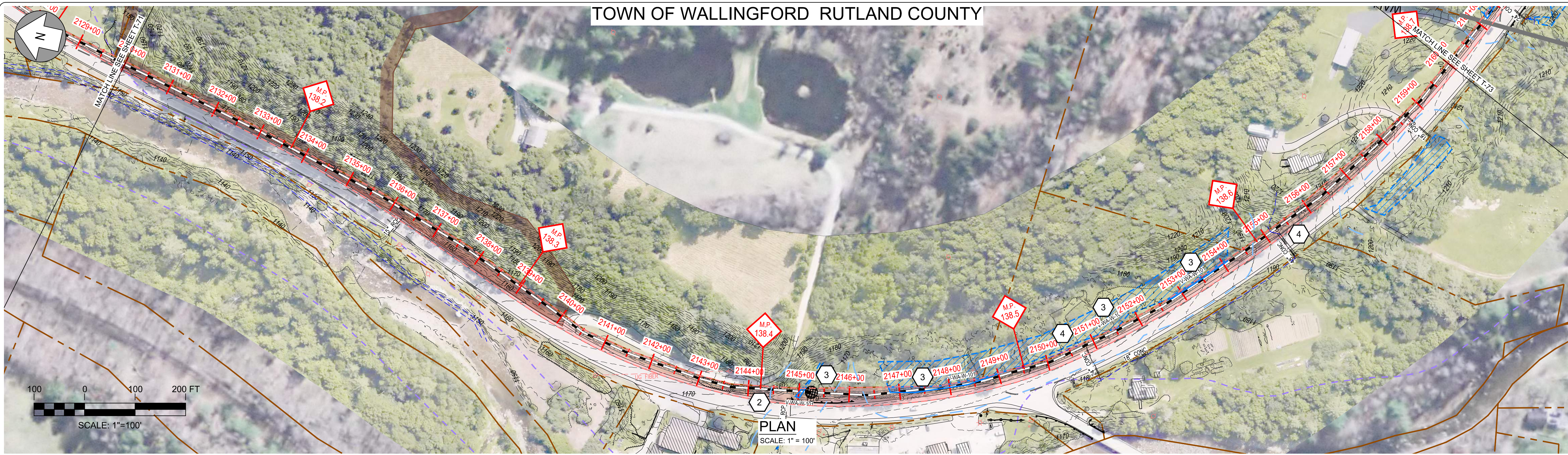
PROFILE
SCALE: HORIZ: 1" = 100'
VERT: 1" = 20'

Designed	.
Drawn	.
Checked	.
Approved	.
Scale	AS NOTED

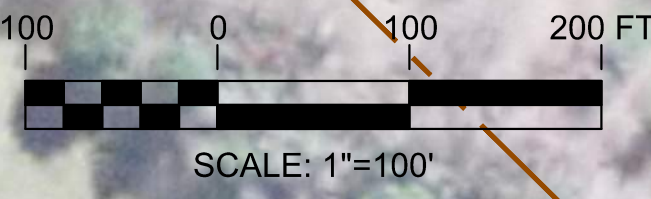
No.	Revision	Date	By	Ck	PE	PE #
A	20% ANR Submission	12/5/14	TRC	AMW		
B	EPSC & PERMITS IFCR	3/8/15	TRC	AMW		
C	ISSUED FOR USE	3/27/15	TRC	AMW		

TDI New England
NEW ENGLAND CLEAN POWER LINK
TDI New England
Plan & Profile - Overland Route
T-71
Prepared by: **OTRC** 9/19/14

TOWN OF WALLINGFORD RUTLAND COUNTY



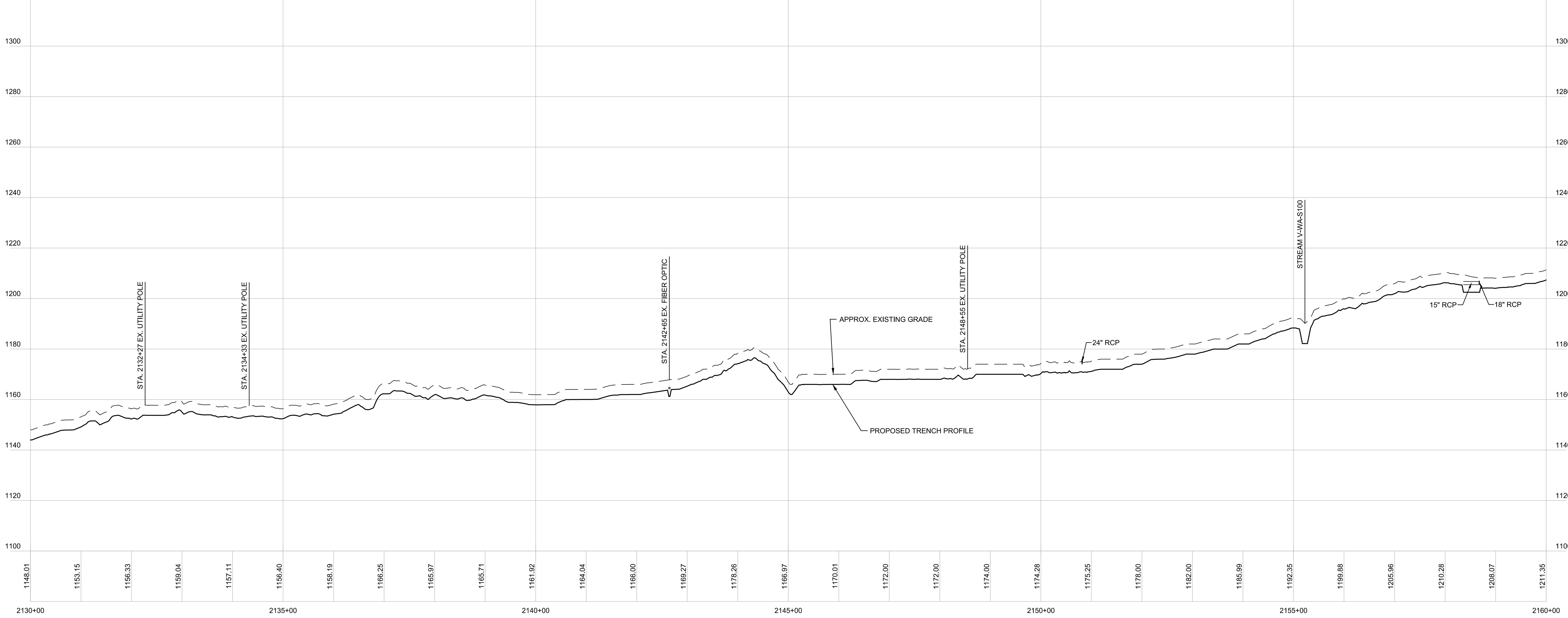
- 1 INSTALL STABILIZED CONSTRUCTION ENTRANCE. SEE TYPICAL DETAIL ON SHEET TD-7.
- 2 DEMARCATÉ LIMIT OF DISTURBANCE AND INSTALL PERIMETER CONTROLS IN ACCORDANCE WITH GENERAL EPSC NOTES AND CONSTRUCTION METHOD TYPICAL DETAILS ON SHEETS G-5 AND CM-1 THRU CM-5.
- 3 WETLAND CROSSING. SEE "TYPICAL WETLAND CONSTRUCTION" ON SHEET TD-7.
- 4 OPEN TRENCH EXCAVATION OR AT-CULVERT STREAM CROSSING TO BE COMPLETED IN ACCORDANCE WITH TYPICAL DETAILS ON SHEETS TD-4 AND TD-5.
- 5 REPLACE STREAM CULVERT IN ACCORDANCE WITH TYPICAL DETAILS ON SHEETS TD-3 AND TD-4.
- 6 DEMARCATÉ AND AVOID POTENTIAL ROOSTING TREE.
- 7 DEMARCATÉ AND AVOID RTE POPULATION.
- 8 IMPLEMENT RTE PLANT PROTECTION PLAN.
- 9 IMPLEMENT RTE ANIMAL PROTECTION PLAN.



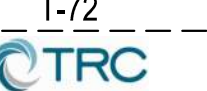
CONSTRUCTION METHOD



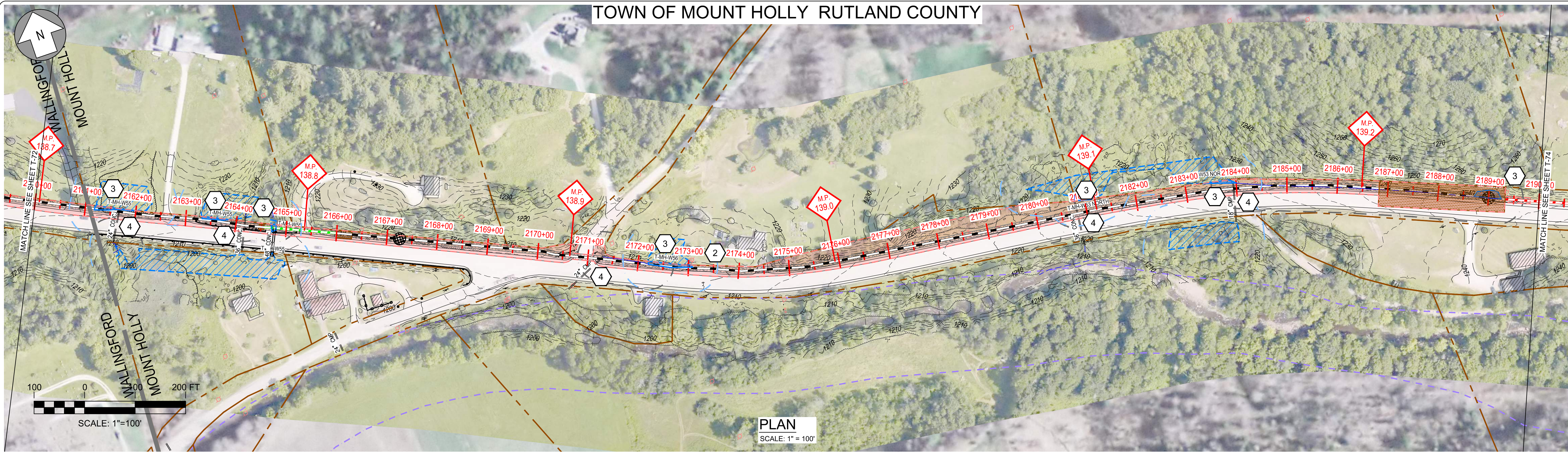
REFER TO SHEETS CM-1 THROUGH CM-5 FOR CONSTRUCTION METHOD DETAILS.



No.	Revision	Date	By	Ck	PE	PE #
A	20% ANR Submission	12/5/14	TRC	AMW		
B	EPSC & PERMITS IFCR	3/8/15	TRC	AMW		
C	ISSUED FOR USE	3/27/15	TRC	AMW		


NEW ENGLAND CLEAN POWER LINK
 TDI New England
 Plan & Profile - Overland Route
 T-72
 Prepared by:  9/19/14

TOWN OF MOUNT HOLLY RUTLAND COUNTY

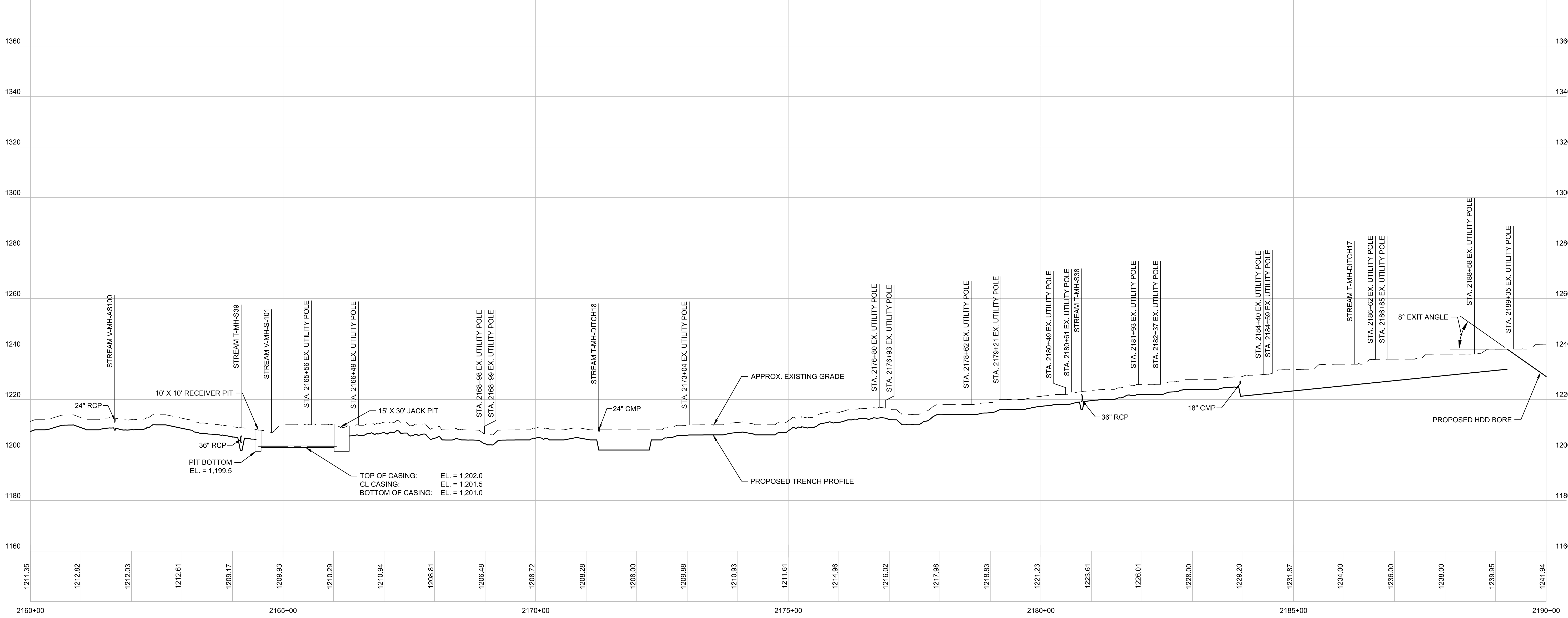


EPSC WORK NOTES

- 1 INSTALL STABILIZED CONSTRUCTION ENTRANCE. SEE TYPICAL DETAIL ON SHEET TD-7.
- 2 DEMARCATÉ LIMIT OF DISTURBANCE AND INSTALL PERIMETER CONTROLS IN ACCORDANCE WITH GENERAL EPSC NOTES AND CONSTRUCTION METHOD TYPICAL DETAILS ON SHEETS G-5 AND CM-1 THRU CM-5.
- 3 WETLAND CROSSING. SEE "TYPICAL WETLAND CONSTRUCTION" ON SHEET TD-7.
- 4 OPEN TRENCH EXCAVATION OR AT-CULVERT STREAM CROSSING TO BE COMPLETED IN ACCORDANCE WITH TYPICAL DETAILS ON SHEETS TD-4 AND TD-5.
- 5 REPLACE STREAM CULVERT IN ACCORDANCE WITH TYPICAL DETAILS ON SHEETS TD-3 AND TD-4.
- 6 DEMARCATÉ AND AVOID POTENTIAL ROOSTING TREE.
- 7 DEMARCATÉ AND AVOID RTE POPULATION.
- 8 IMPLEMENT RTE PLANT PROTECTION PLAN.
- 9 IMPLEMENT RTE ANIMAL PROTECTION PLAN.



REFER TO SHEETS CM-1 THROUGH CM-5 FOR CONSTRUCTION METHOD DETAILS.

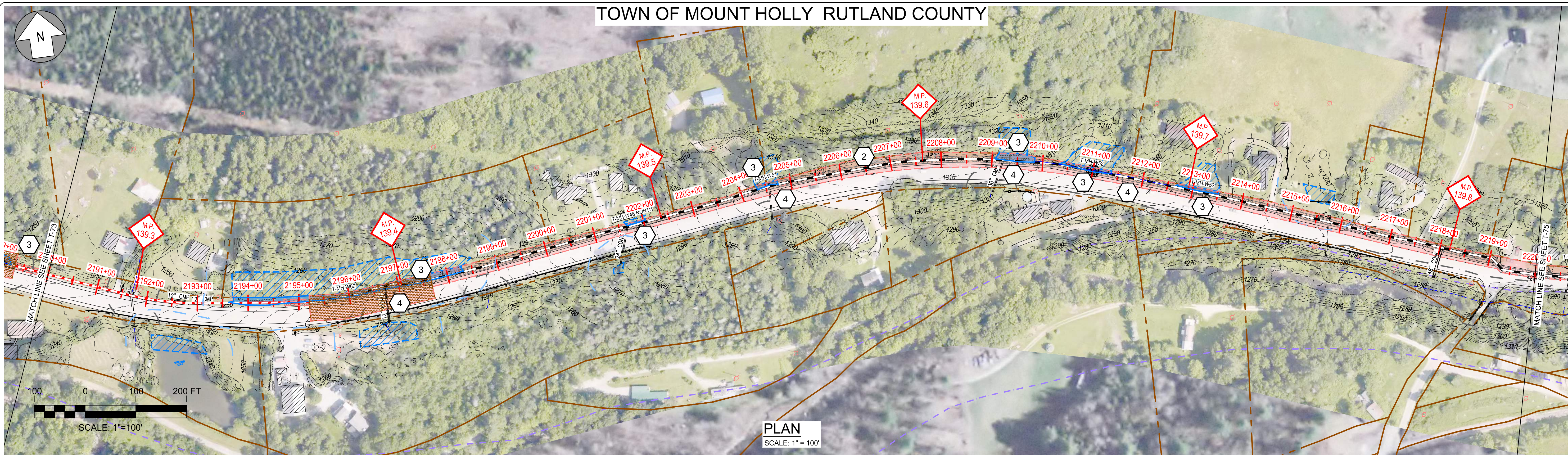


Designed	.
Drawn	.
Checked	.
Approved	.
Scale	AS NOTED

No.	Revision	Date	By	Ck	PE	PE #
A	20% ANR Submission	12/5/14	TRC	AMW		
B	EPSC & PERMITS IFCR	3/8/15	TRC	AMW		
C	ISSUED FOR USE	3/27/15	TRC	AMW		

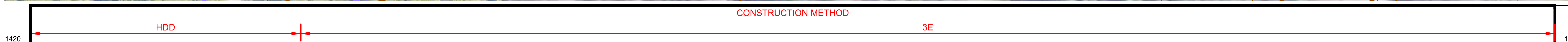
TDI New England
NEW ENGLAND CLEAN POWER LINK
Plan & Profile - Overland Route
T-73
Prepared by: **OTRC** 9/19/14

TOWN OF MOUNT HOLLY RUTLAND COUNTY

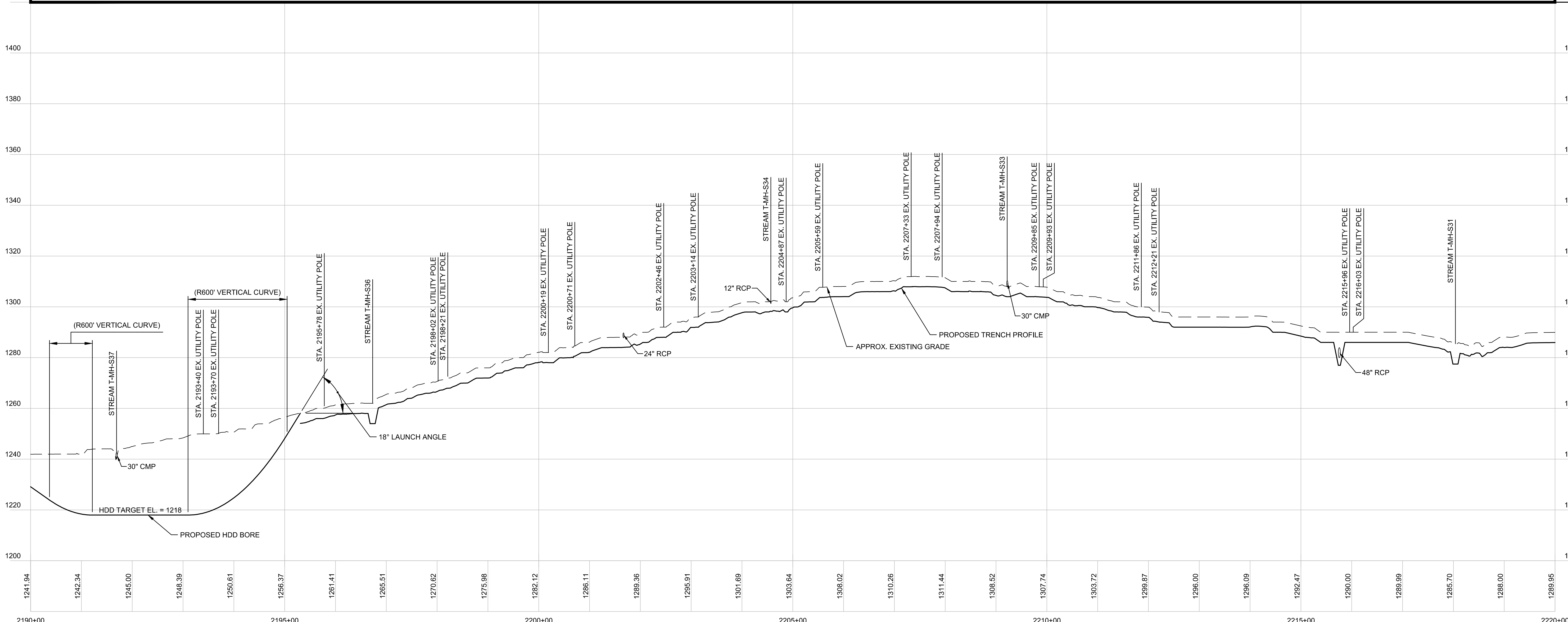


EPSC WORK NOTES

- 1 INSTALL STABILIZED CONSTRUCTION ENTRANCE. SEE TYPICAL DETAIL ON SHEET TD-7.
- 2 DEMARCATATE LIMIT OF DISTURBANCE AND INSTALL PERIMETER CONTROLS IN ACCORDANCE WITH GENERAL EPSC NOTES AND CONSTRUCTION METHOD TYPICAL DETAILS ON SHEETS G-5 AND CM-1 THRU CM-5.
- 3 WETLAND CROSSING. SEE "TYPICAL WETLAND CONSTRUCTION" ON SHEET TD-7.
- 4 OPEN TRENCH EXCAVATION OR AT-CULVERT STREAM CROSSING TO BE COMPLETED IN ACCORDANCE WITH TYPICAL DETAILS ON SHEETS TD-4 AND TD-5.
- 5 REPLACE STREAM CULVERT IN ACCORDANCE WITH TYPICAL DETAILS ON SHEETS TD-3 AND TD-4.
- 6 DEMARCATATE AND AVOID POTENTIAL ROOSTING TREE.
- 7 DEMARCATATE AND AVOID RTE POPULATION.
- 8 IMPLEMENT RTE PLANT PROTECTION PLAN.
- 9 IMPLEMENT RTE ANIMAL PROTECTION PLAN.



REFER TO SHEETS CM-1 THROUGH CM-5 FOR CONSTRUCTION METHOD DETAILS.

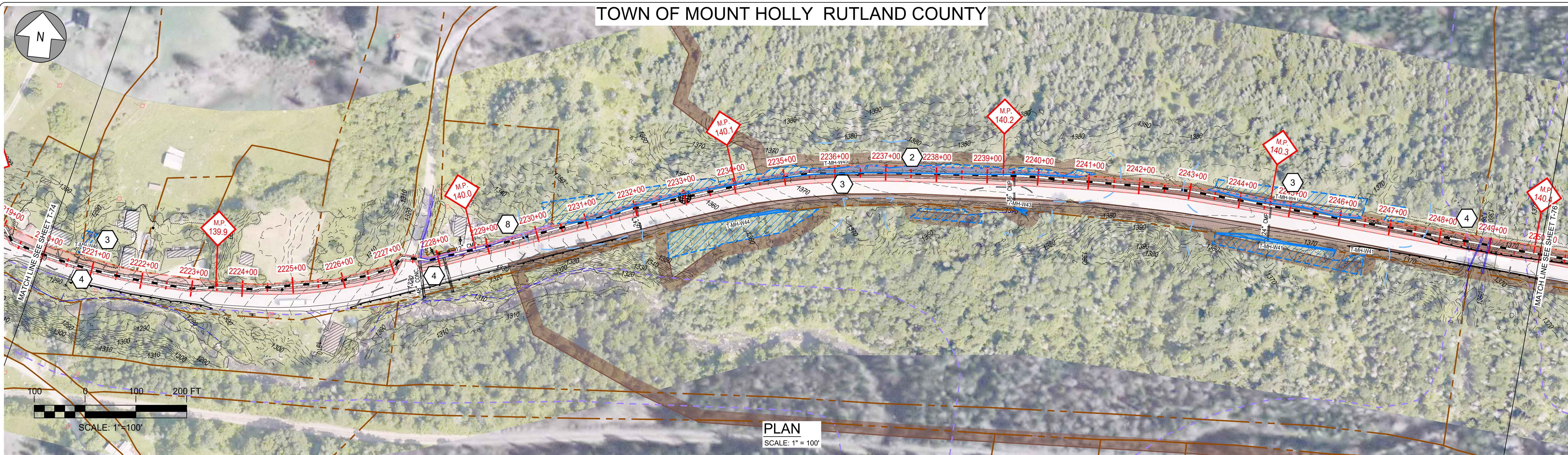


Designed	.
Drawn	.
Checked	.
Approved	.
Scale	AS NOTED

No.	Revision	Date	By	Ck	PE	PE #
A	20% ANR Submission	12/5/14	TRC	AMW		
B	EPSC & PERMITS IFCR	3/6/15	TRC	AMW		
C	ISSUED FOR USE	3/27/15	TRC	AMW		

TDI New England
NEW ENGLAND CLEAN POWER LINK
TDI New England
Plan & Profile - Overland Route
T-74
Prepared by: **OTRC** 9/19/14

TOWN OF MOUNT HOLLY RUTLAND COUNTY



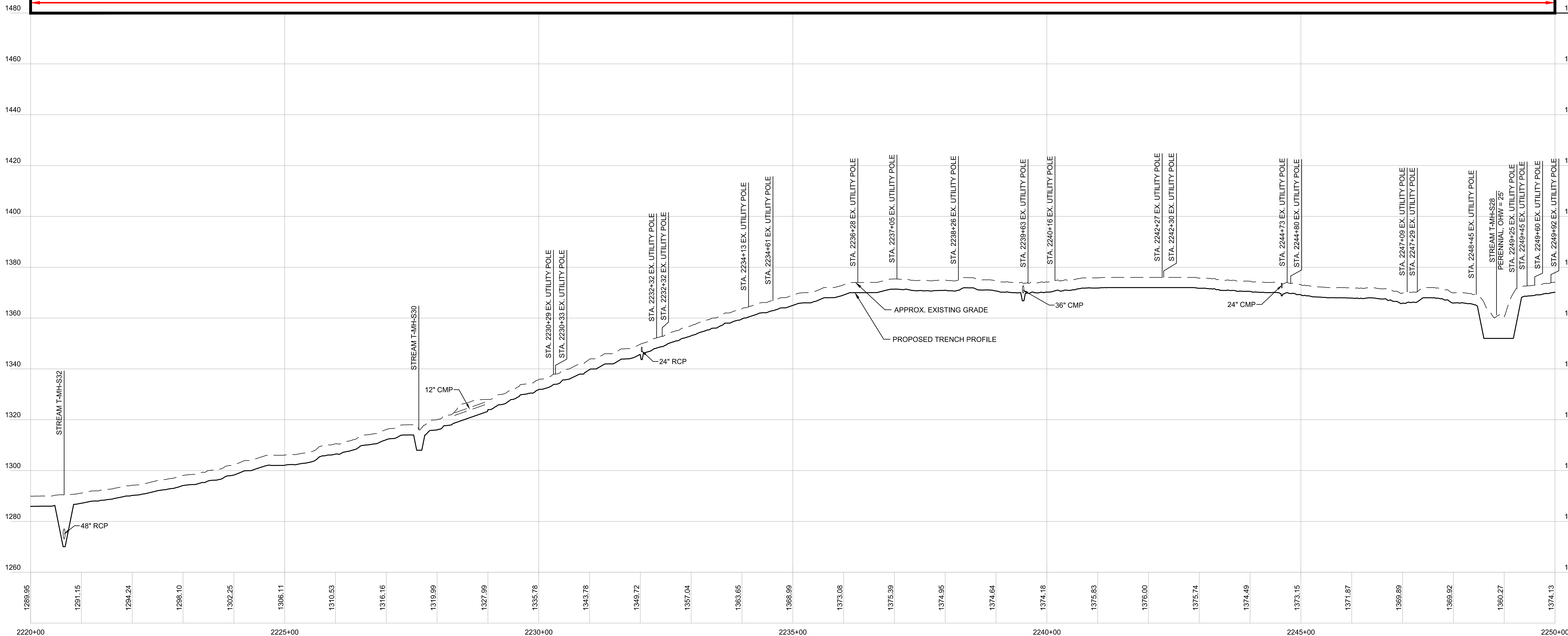
EPSC WORK NOTES

- 1 INSTALL STABILIZED CONSTRUCTION ENTRANCE. SEE TYPICAL DETAIL ON SHEET TD-7.
- 2 DEMARCATÉ LIMIT OF DISTURBANCE AND INSTALL PERIMETER CONTROLS IN ACCORDANCE WITH GENERAL EPSC NOTES AND CONSTRUCTION METHOD TYPICAL DETAILS ON SHEETS G-5 AND CM-1 THRU CM-5.
- 3 WETLAND CROSSING. SEE "TYPICAL WETLAND CONSTRUCTION" ON SHEET TD-7.
- 4 OPEN TRENCH EXCAVATION OR AT-CULVERT STREAM CROSSING TO BE COMPLETED IN ACCORDANCE WITH TYPICAL DETAILS ON SHEETS TD-4 AND TD-5.
- 5 REPLACE STREAM CULVERT IN ACCORDANCE WITH TYPICAL DETAILS ON SHEETS TD-3 AND TD-4.
- 6 DEMARCATÉ AND AVOID POTENTIAL ROOSTING TREE.
- 7 DEMARCATÉ AND AVOID RTE POPULATION.
- 8 IMPLEMENT RTE PLANT PROTECTION PLAN.
- 9 IMPLEMENT RTE ANIMAL PROTECTION PLAN.

PLAN
SCALE: 1" = 100'

CONSTRUCTION METHOD
3E

REFER TO SHEETS CM-1 THROUGH CM-5 FOR CONSTRUCTION METHOD DETAILS.



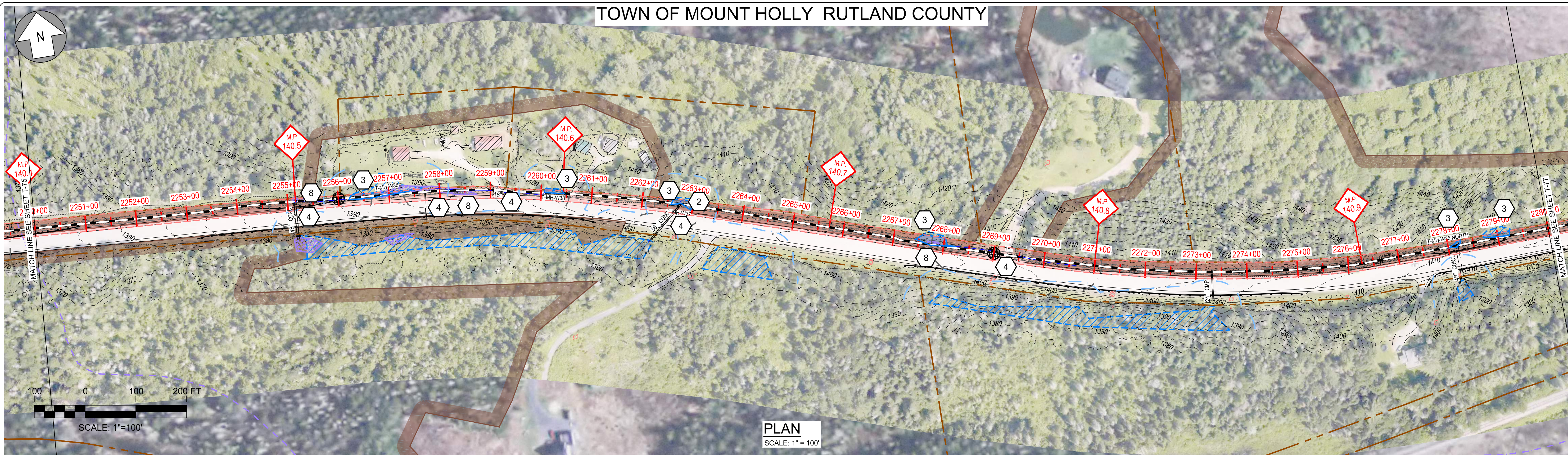
PROFILE
SCALE: HORIZ: 1" = 100'
VERT: 1" = 20'

Designed	.
Drawn	.
Checked	.
Approved	.
Scale	AS NOTED

No.	Revision	Date	By	Ck	PE	PE #
A	20% ANR Submission	12/5/14	TRC	AMW		
B	EPSC & PERMITS IFCR	3/8/15	TRC	AMW		
C	ISSUED FOR USE	3/27/15	TRC	AMW		

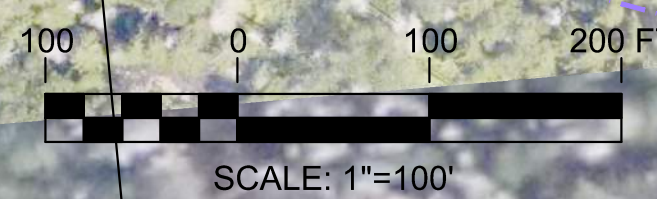
TDI New England
NEW ENGLAND CLEAN POWER LINK
Plan & Profile - Overland Route
T-75
Prepared by: **OTRC** 9/19/14

TOWN OF MOUNT HOLLY RUTLAND COUNTY



EPSC WORK NOTES

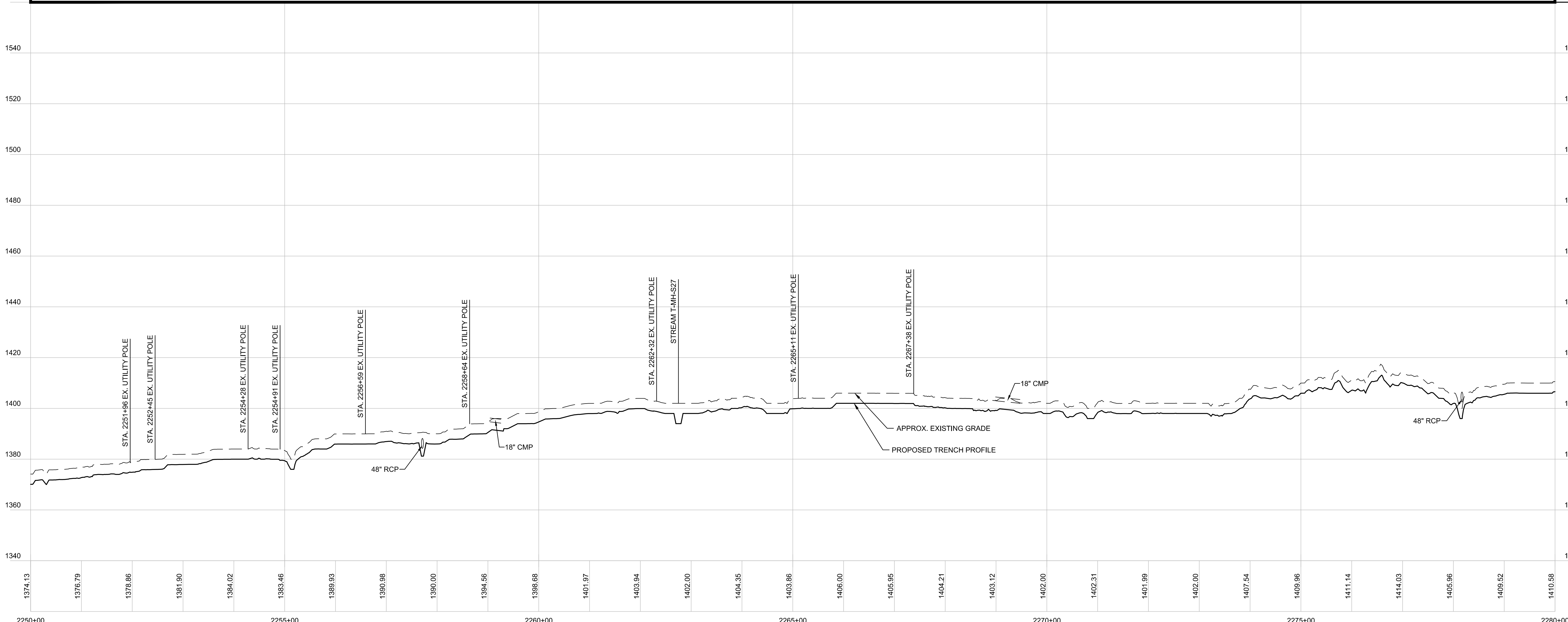
- 1 INSTALL STABILIZED CONSTRUCTION ENTRANCE. SEE TYPICAL DETAIL ON SHEET TD-7.
- 2 DEMARCATATE LIMIT OF DISTURBANCE AND INSTALL PERIMETER CONTROLS IN ACCORDANCE WITH GENERAL EPSC NOTES AND CONSTRUCTION METHOD TYPICAL DETAILS ON SHEETS G-5 AND CM-1 THRU CM-5.
- 3 WETLAND CROSSING. SEE "TYPICAL WETLAND CONSTRUCTION" ON SHEET TD-7.
- 4 OPEN TRENCH EXCAVATION OR AT-CULVERT STREAM CROSSING TO BE COMPLETED IN ACCORDANCE WITH TYPICAL DETAILS ON SHEETS TD-4 AND TD-5.
- 5 REPLACE STREAM CULVERT IN ACCORDANCE WITH TYPICAL DETAILS ON SHEETS TD-3 AND TD-4.
- 6 DEMARCATATE AND AVOID POTENTIAL ROOSTING TREE.
- 7 DEMARCATATE AND AVOID RTE POPULATION.
- 8 IMPLEMENT RTE PLANT PROTECTION PLAN.
- 9 IMPLEMENT RTE ANIMAL PROTECTION PLAN.



PLAN
SCALE: 1" = 100'



REFER TO SHEETS CM-1 THROUGH CM-5 FOR CONSTRUCTION METHOD DETAILS.



PROFILE
SCALE: HORIZ: 1" = 100'
VERT: 1" = 20'

Designed	.
Drawn	.
Checked	.
Approved	.
Scale	AS NOTED

No.	Revision	Date	By	Ck	PE	PE #
A	20% ANR Submission	12/5/14	TRC	AMW		
B	EPSC & PERMITS IFCR	3/8/15	TRC	AMW		
C	ISSUED FOR USE	3/27/15	TRC	AMW		

NEW ENGLAND CLEAN POWER LINK

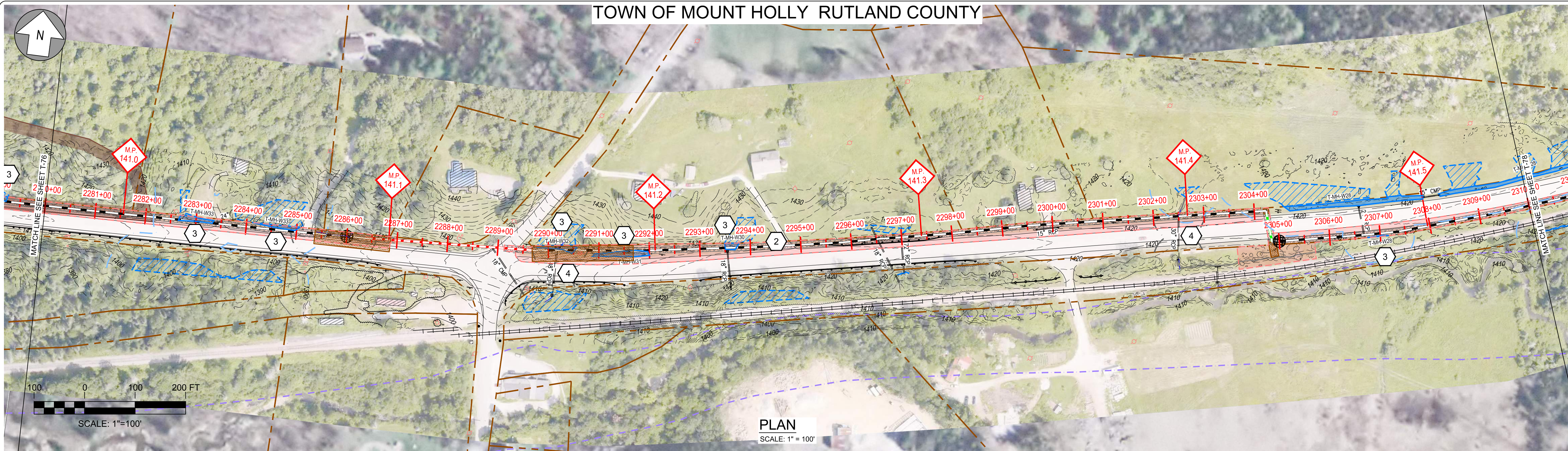
 TDI New England

 Plan & Profile - Overland Route

 T-76

 Prepared by: 9/19/14

TOWN OF MOUNT HOLLY RUTLAND COUNTY

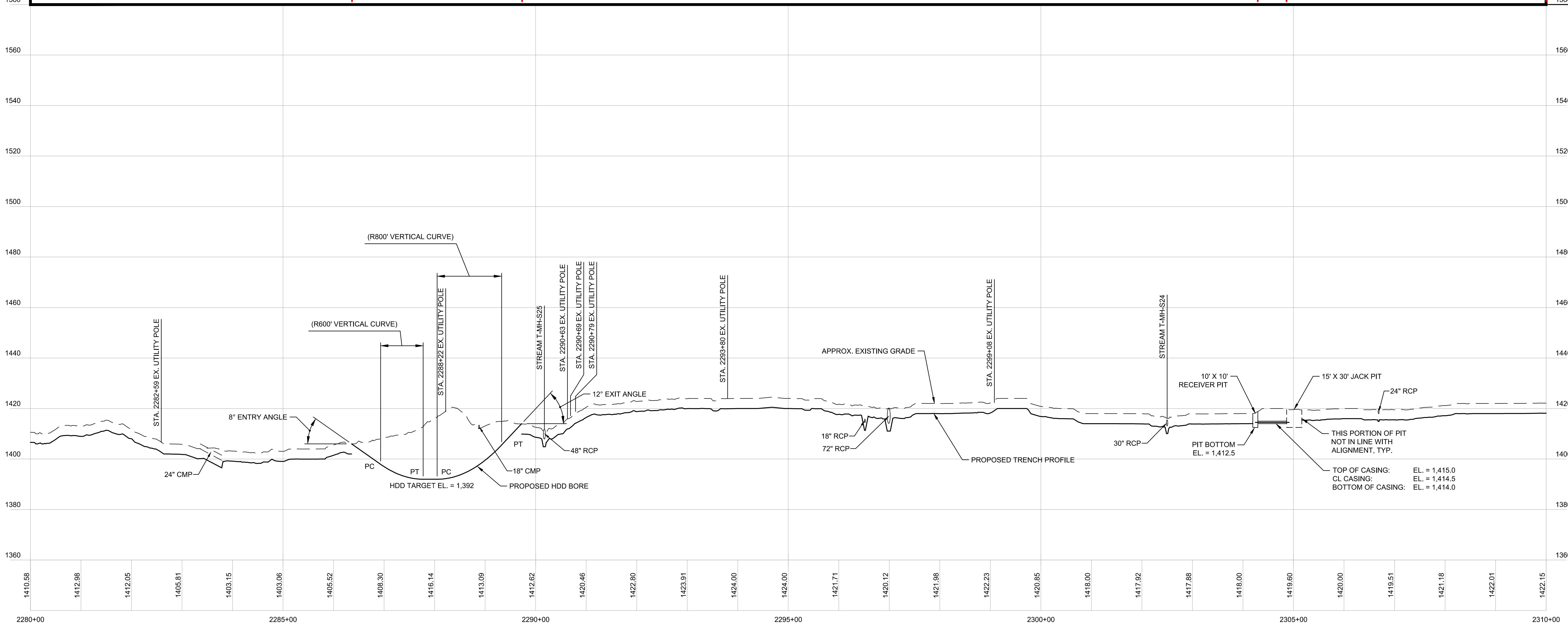


EPSC WORK NOTES

- 1 INSTALL STABILIZED CONSTRUCTION ENTRANCE. SEE TYPICAL DETAIL ON SHEET TD-7.
- 2 DEMARCATÉ LIMIT OF DISTURBANCE AND INSTALL PERIMETER CONTROLS IN ACCORDANCE WITH GENERAL EPSC NOTES AND CONSTRUCTION METHOD TYPICAL DETAILS ON SHEETS G-5 AND CM-1 THRU CM-5.
- 3 WETLAND CROSSING. SEE "TYPICAL WETLAND CONSTRUCTION" ON SHEET TD-7.
- 4 OPEN TRENCH EXCAVATION OR AT-CULVERT STREAM CROSSING TO BE COMPLETED IN ACCORDANCE WITH TYPICAL DETAILS ON SHEETS TD-4 AND TD-5.
- 5 REPLACE STREAM CULVERT IN ACCORDANCE WITH TYPICAL DETAILS ON SHEETS TD-3 AND TD-4.
- 6 DEMARCATÉ AND AVOID POTENTIAL ROOSTING TREE.
- 7 DEMARCATÉ AND AVOID RTE POPULATION.
- 8 IMPLEMENT RTE PLANT PROTECTION PLAN.
- 9 IMPLEMENT RTE ANIMAL PROTECTION PLAN.



REFER TO SHEETS CM-1 THROUGH CM-5 FOR CONSTRUCTION METHOD DETAILS.

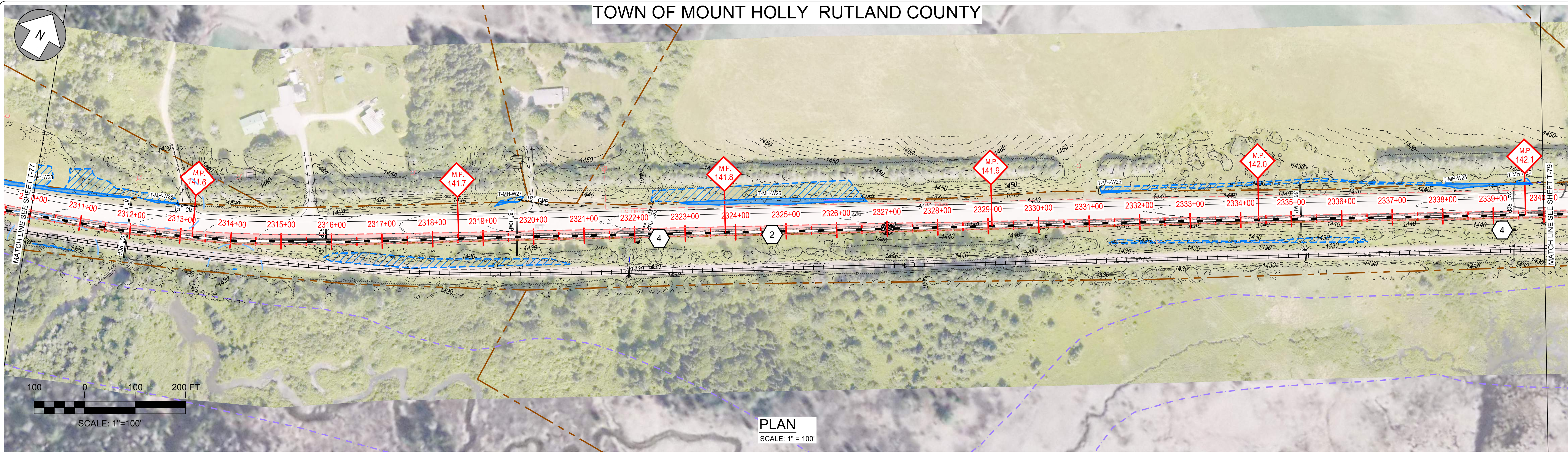


Designed	.
Drawn	.
Checked	.
Approved	.
Scale	AS NOTED

No.	Revision	Date	By	Ck	PE	PE #
A	20% ANR Submission	12/5/14	TRC	AMW		
B	EPSC & PERMITS IFCR	3/8/15	TRC	AMW		
C	ISSUED FOR USE	3/27/15	TRC	AMW		

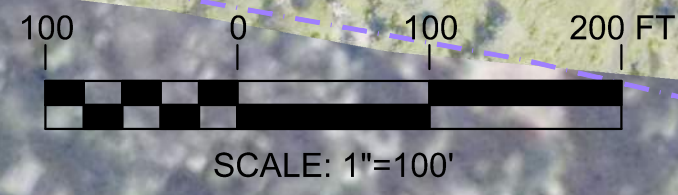
TDI New England
NEW ENGLAND CLEAN POWER LINK
Plan & Profile - Overland Route
T-77
Prepared by: **OTRC** 9/19/14

TOWN OF MOUNT HOLLY RUTLAND COUNTY



EPSC WORK NOTES

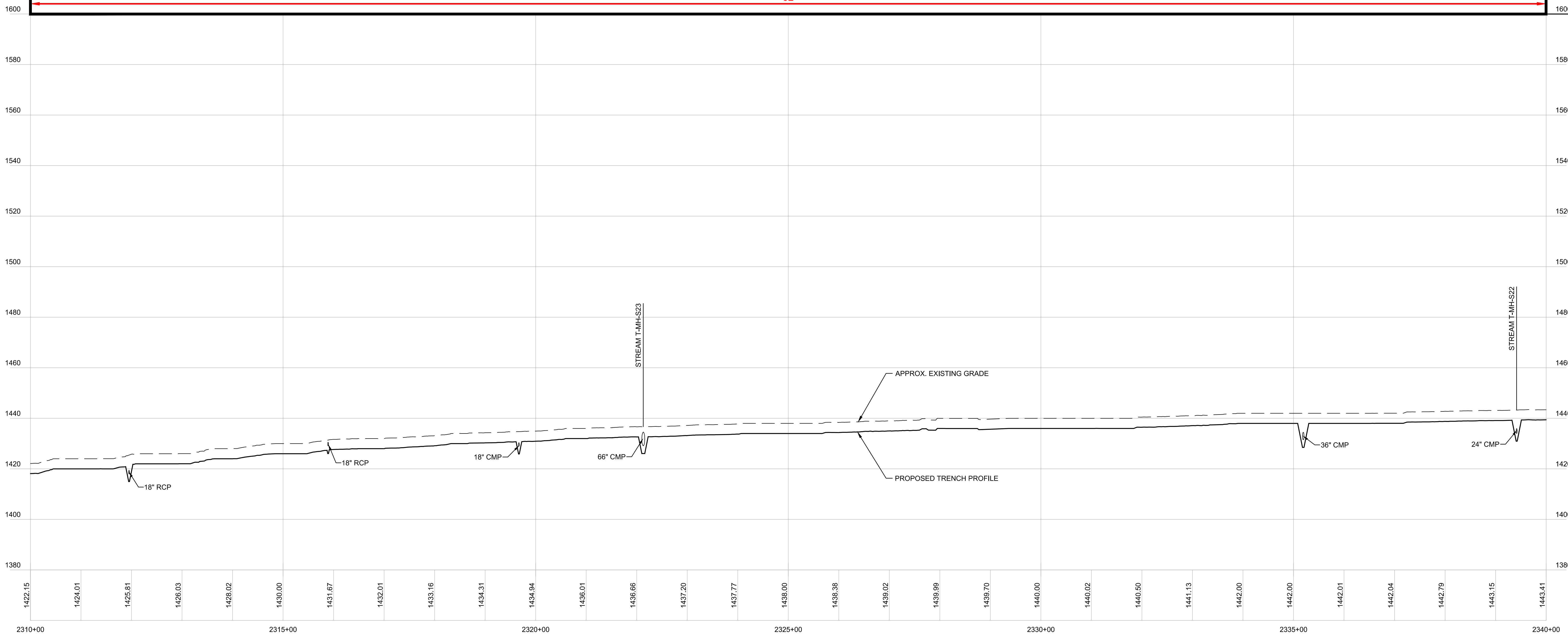
- 1 INSTALL STABILIZED CONSTRUCTION ENTRANCE. SEE TYPICAL DETAIL ON SHEET TD-7.
- 2 DEMARCATÉ LIMIT OF DISTURBANCE AND INSTALL PERIMETER CONTROLS IN ACCORDANCE WITH GENERAL EPSC NOTES AND CONSTRUCTION METHOD TYPICAL DETAILS ON SHEETS G-5 AND CM-1 THRU CM-5.
- 3 WETLAND CROSSING. SEE "TYPICAL WETLAND CONSTRUCTION" ON SHEET TD-7.
- 4 OPEN TRENCH EXCAVATION OR AT-CULVERT STREAM CROSSING TO BE COMPLETED IN ACCORDANCE WITH TYPICAL DETAILS ON SHEETS TD-4 AND TD-5.
- 5 REPLACE STREAM CULVERT IN ACCORDANCE WITH TYPICAL DETAILS ON SHEETS TD-3 AND TD-4.
- 6 DEMARCATÉ AND AVOID POTENTIAL ROOSTING TREE.
- 7 DEMARCATÉ AND AVOID RTE POPULATION.
- 8 IMPLEMENT RTE PLANT PROTECTION PLAN.
- 9 IMPLEMENT RTE ANIMAL PROTECTION PLAN.



PLAN
SCALE: 1" = 100'

CONSTRUCTION METHOD
3E

REFER TO SHEETS CM-1 THROUGH CM-5 FOR CONSTRUCTION METHOD DETAILS.



PROFILE
SCALE: HORIZ: 1" = 100'
VERT: 1" = 20'

Designed	.
Drawn	.
Checked	.
Approved	.
Scale	AS NOTED

No.	Revision	Date	By	Ck	PE	PE #
A	20% ANR Submission	12/5/14	TRC	AMW		
B	EPSC & PERMITS IFCR	3/8/15	TRC	AMW		
C	ISSUED FOR USE	3/27/15	TRC	AMW		

NEW ENGLAND CLEAN POWER LINK

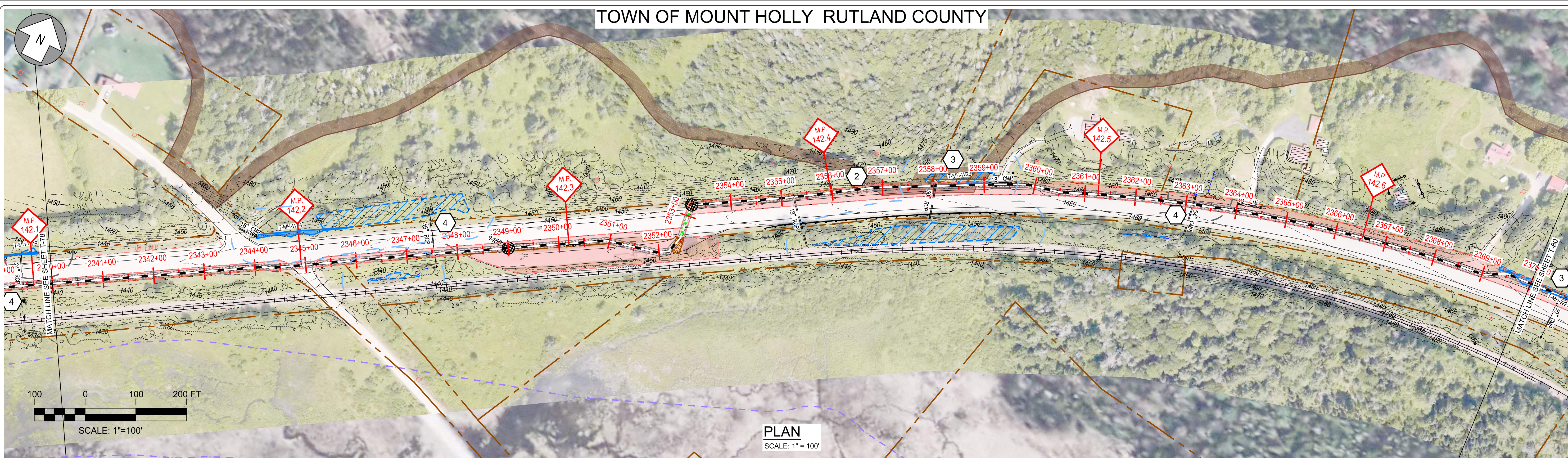
 TDI New England

 Plan & Profile - Overland Route

 T-78

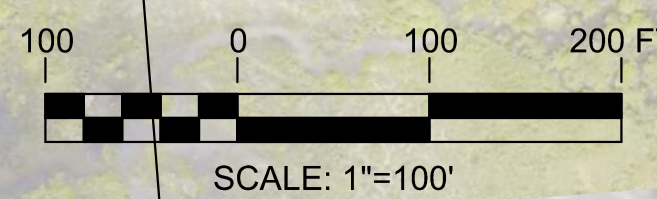
 Prepared by: 9/19/14

TOWN OF MOUNT HOLLY RUTLAND COUNTY



EPSC WORK NOTES

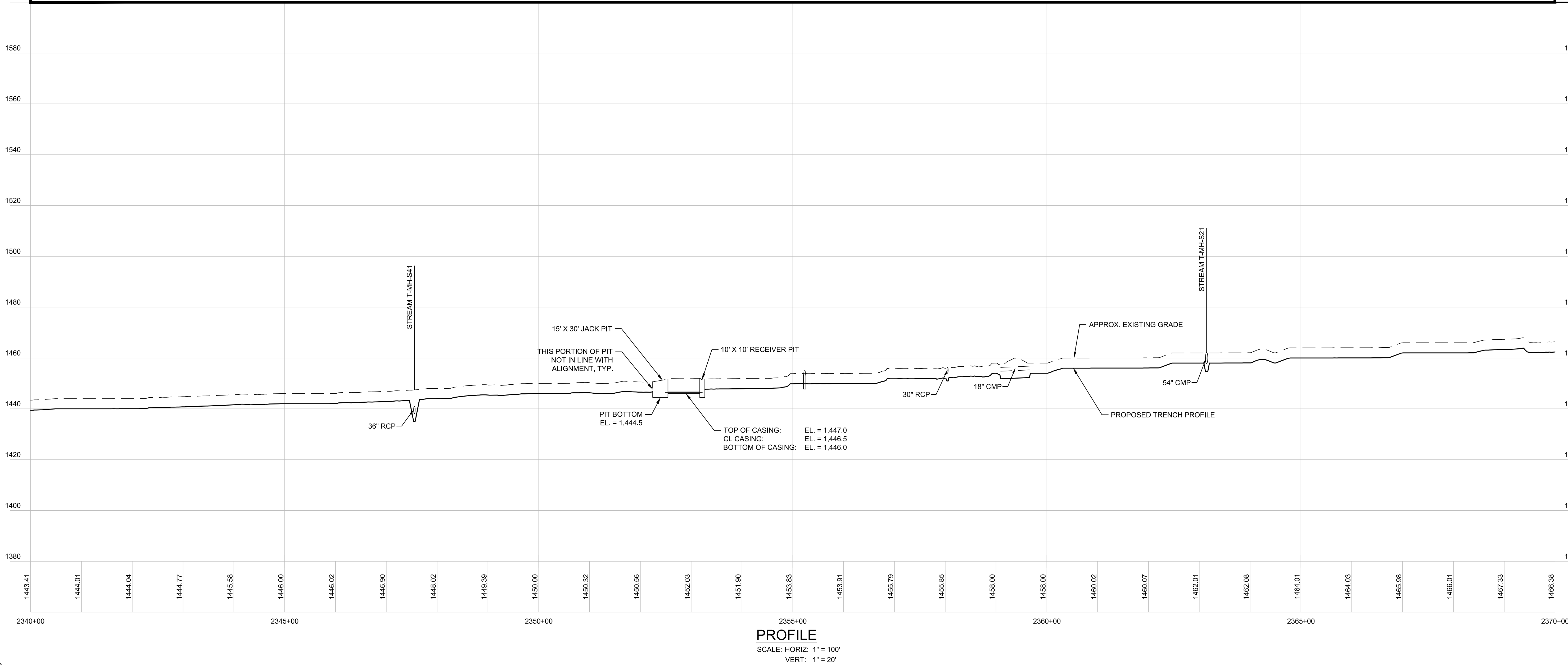
- 1 INSTALL STABILIZED CONSTRUCTION ENTRANCE. SEE TYPICAL DETAIL ON SHEET TD-7.
- 2 DEMARCATÉ LIMIT OF DISTURBANCE AND INSTALL PERIMETER CONTROLS IN ACCORDANCE WITH GENERAL EPSC NOTES AND CONSTRUCTION METHOD TYPICAL DETAILS ON SHEETS G-5 AND CM-1 THRU CM-5.
- 3 WETLAND CROSSING. SEE "TYPICAL WETLAND CONSTRUCTION" ON SHEET TD-7.
- 4 OPEN TRENCH EXCAVATION OR AT-CULVERT STREAM CROSSING TO BE COMPLETED IN ACCORDANCE WITH TYPICAL DETAILS ON SHEETS TD-4 AND TD-5.
- 5 REPLACE STREAM CULVERT IN ACCORDANCE WITH TYPICAL DETAILS ON SHEETS TD-3 AND TD-4.
- 6 DEMARCATÉ AND AVOID POTENTIAL ROOSTING TREE.
- 7 DEMARCATÉ AND AVOID RTE POPULATION.
- 8 IMPLEMENT RTE PLANT PROTECTION PLAN.
- 9 IMPLEMENT RTE ANIMAL PROTECTION PLAN.



PLAN
SCALE: 1" = 100'



REFER TO SHEETS CM-1 THROUGH CM-5 FOR CONSTRUCTION METHOD DETAILS.



Designed	.
Drawn	.
Checked	.
Approved	.
Scale	AS NOTED

No.	Revision	Date	By	Ck	PE	PE #
A	20% ANR Submission	12/5/14	TRC	AMW		
B	EPSC & PERMITS IFCR	3/9/15	TRC	AMW		
C	ISSUED FOR USE	3/27/15	TRC	AMW		

NEW ENGLAND CLEAN POWER LINK

 TDI New England

 Plan & Profile - Overland Route

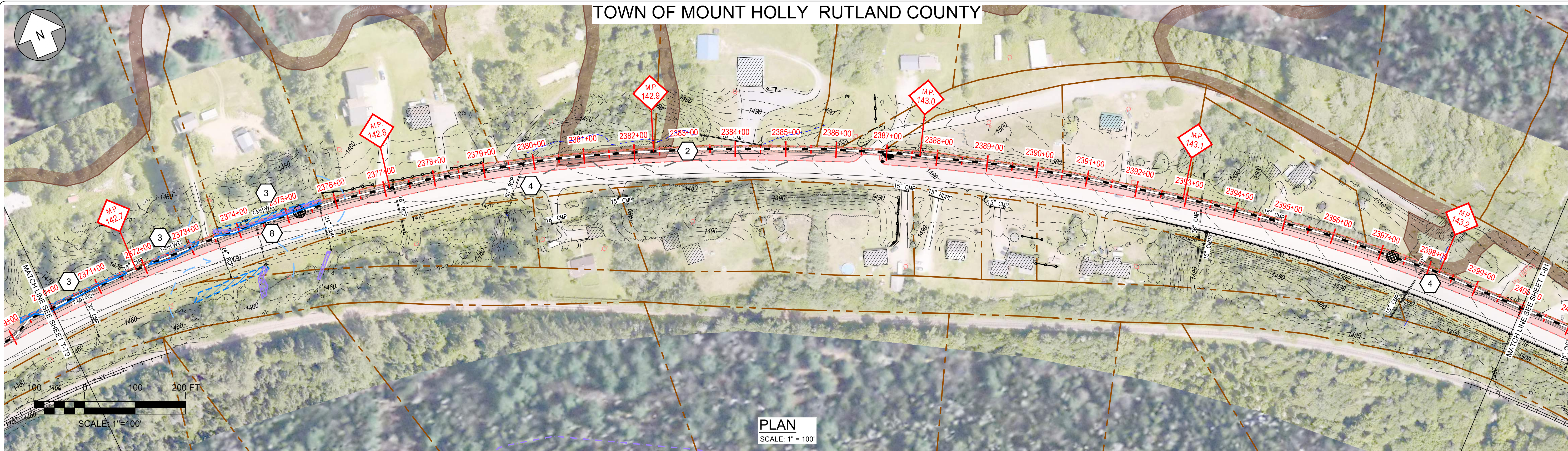
 T-79

 Prepared by: 9/19/14

TOWN OF MOUNT HOLLY RUTLAND COUNTY

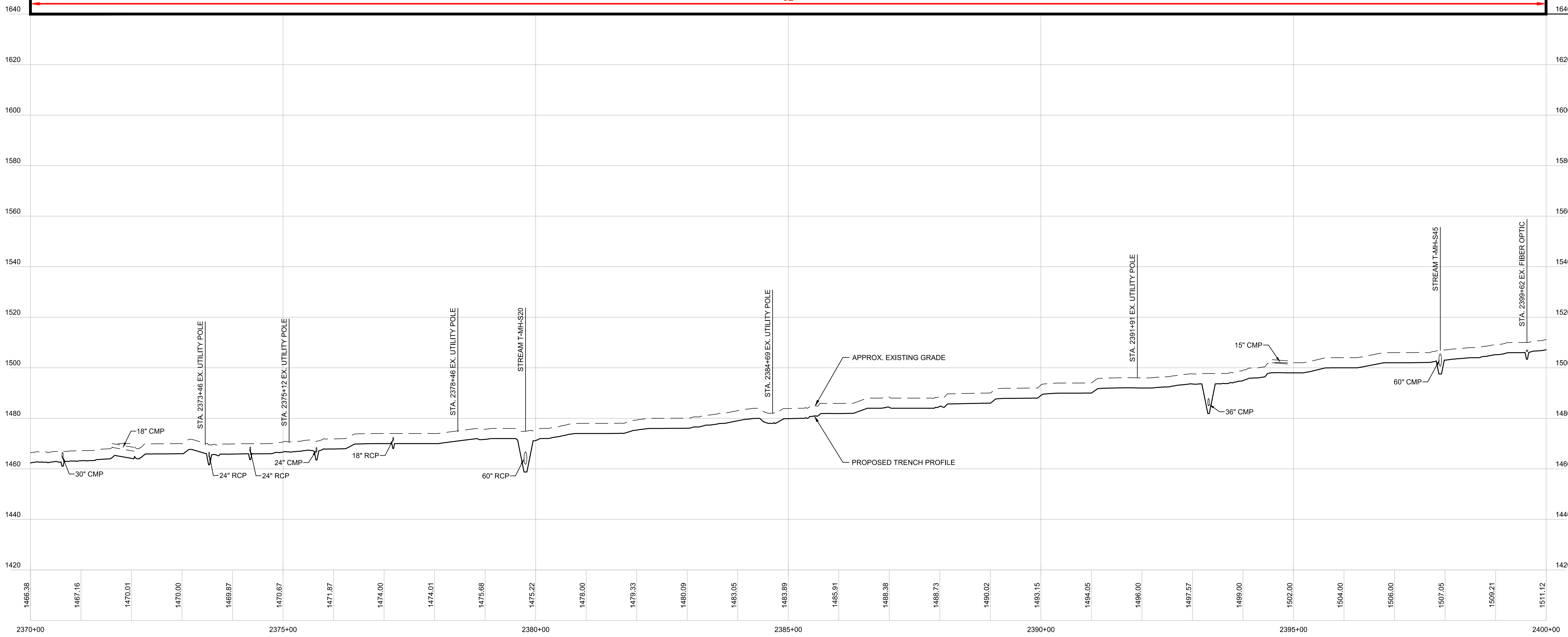
EPSC WORK NOTES

- 1 INSTALL STABILIZED CONSTRUCTION ENTRANCE. SEE TYPICAL DETAIL ON SHEET TD-7.
- 2 DEMARCATATE LIMIT OF DISTURBANCE AND INSTALL PERIMETER CONTROLS IN ACCORDANCE WITH GENERAL EPSC NOTES AND CONSTRUCTION METHOD TYPICAL DETAILS ON SHEETS G-5 AND CM-1 THRU CM-5.
- 3 WETLAND CROSSING. SEE "TYPICAL WETLAND CONSTRUCTION" ON SHEET TD-7.
- 4 OPEN TRENCH EXCAVATION OR AT-CULVERT STREAM CROSSING TO BE COMPLETED IN ACCORDANCE WITH TYPICAL DETAILS ON SHEETS TD-4 AND TD-5.
- 5 REPLACE STREAM CULVERT IN ACCORDANCE WITH TYPICAL DETAILS ON SHEETS TD-3 AND TD-4.
- 6 DEMARCATATE AND AVOID POTENTIAL ROOSTING TREE.
- 7 DEMARCATATE AND AVOID RTE POPULATION.
- 8 IMPLEMENT RTE PLANT PROTECTION PLAN.
- 9 IMPLEMENT RTE ANIMAL PROTECTION PLAN.



CONSTRUCTION METHOD
3E

REFER TO SHEETS CM-1 THROUGH CM-5 FOR CONSTRUCTION METHOD DETAILS.



Designed	.
Drawn	.
Checked	.
Approved	.
Scale	AS NOTED

No.	Revision	Date	By	Ck	PE	PE #
A	20% ANR Submission	12/5/14	TRC	AMW		
B	EPSC & PERMITS IFCR	3/8/15	TRC	AMW		
C	ISSUED FOR USE	3/27/15	TRC	AMW		

TDI New England
NEW ENGLAND CLEAN POWER LINK
TDI New England
Plan & Profile - Overland Route
T-80
Prepared by: **OTRC** 9/19/14